



We share a commitment to delivering high-quality teaching and learning informed by research and best practice. To achieve this, we are developing a common pedagogy that provides a consistent approach across our schools while respecting individual identity.

Kaleidoscope is an outward-looking Multi Academy Trust, staying current with educational advances and reflecting on the impact of our initiatives. Our goal is excellence in teaching and learning for every child, underpinned by our five core values – the 5Cs.

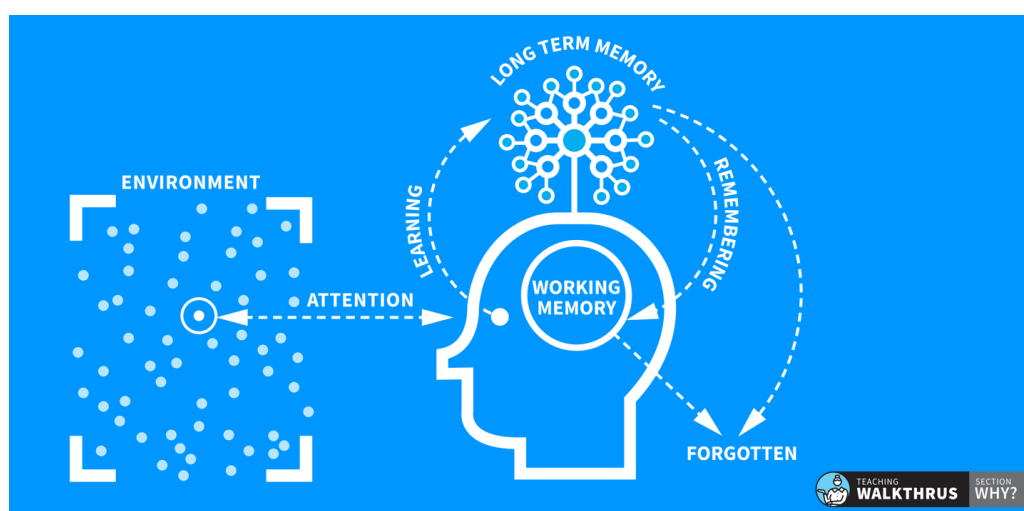
#### Evidence informed practice



## TEACHING WALKTHRUS

Our pedagogy is rooted in Rosenshine’s Principles of Instruction, endorsed by NASEN for raising SEND standards (see SEND Policy), and expanded by researchers like Oliver Caviglioli and Tom Sherrington through the *WalkThru* series. These

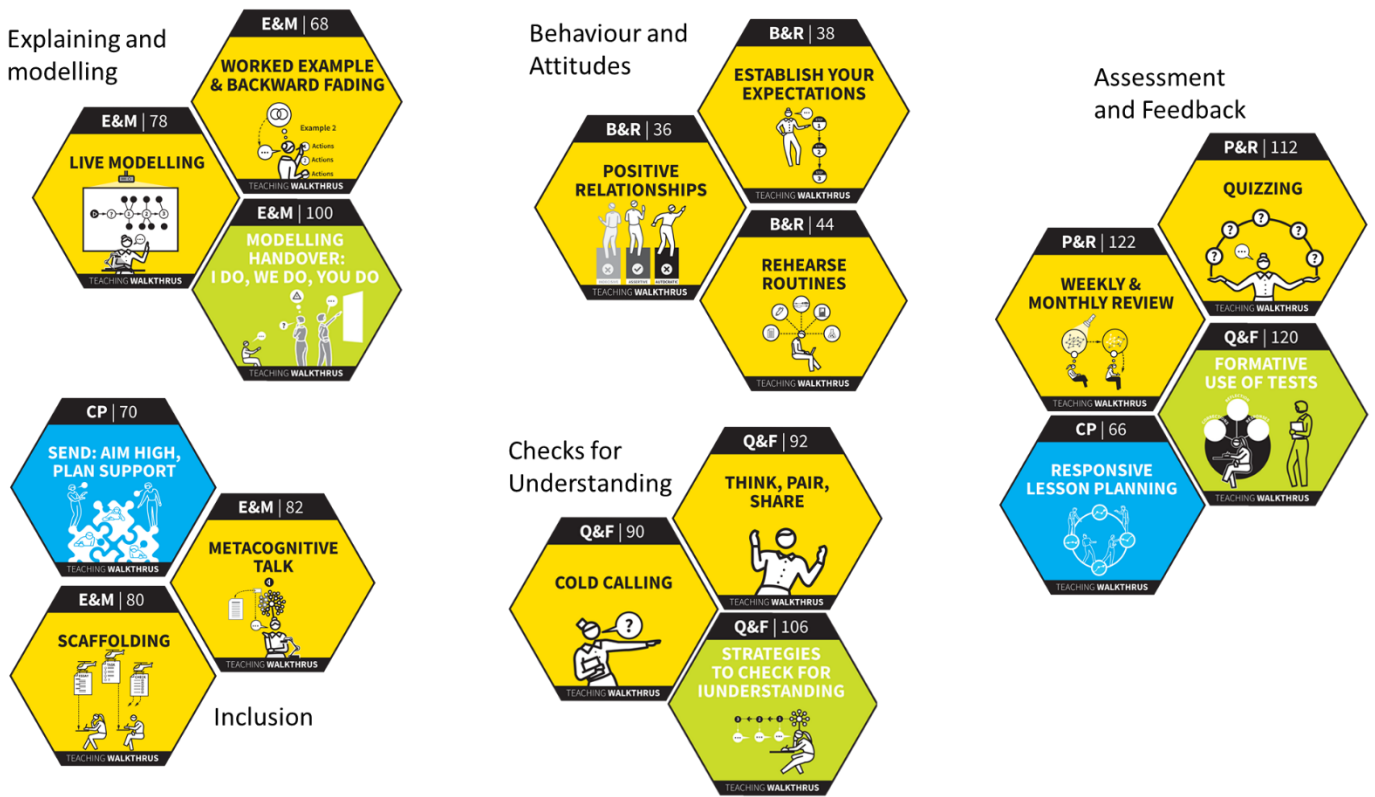
provide clear, research-based strategies for classroom practice.



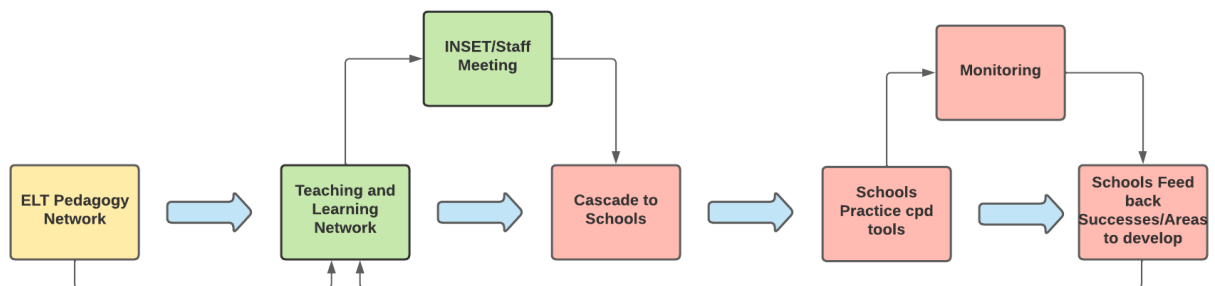
***Cognitive Load Theory: Remembering = Understanding***

**Inclusive classrooms for everyone**

Our approach to pedagogy is rooted in the neuroscience of how learning happens. When our teachers take deliberate steps to reduce the cognitive load and plan lessons and units of work for remembering, we are making our classrooms a better plan for our disadvantaged and vulnerable learners. We have distilled the most important strategies for teaching and learning into the 'KMAT Essentials' – these form the bedrock of our inclusive practice. We know that high quality wave 1 practice the key to ensuring that children gain the strong foundations they need in order to progress to the next phase of their learning and beyond.



**How we will Plan, Deliver and Embed our Approach to Pedagogy**



### **Executive Leadership Team - Pedagogy and CPD Group**

The role of this group is to take a lead in planning Kaleidoscope's approach to pedagogy. This will be based upon research and current best practice. From this, manageable priorities are planned which outlines what the key focus will be and the timeframe for delivery.

### **Teaching and Learning Network**

Each KMAT school has a Teaching and Learning Lead who forms the Network team. This group lead the delivery of teaching and learning priorities within each school and support the senior leadership team in monitoring how priorities are embedded.

### **Monitoring**

Monitoring the impact of our Pedagogy development, CPD programme and subsequent classroom practice is vital to improving outcomes for our children. This can be carried out in a variety of methods including through Classroom Walks , observation, book scrutinies, learning walks and staff/pupil interviews. From this schools can share good practice across the MAT, target support for staff including peer to peer, to improve teaching and learning. The information gathered form part of a wider MAT monitoring programme of teaching and learning.

### **Built in time for training**

Kaleidoscope MAT recognises the need to invest in CPD for their staff to continue to improve pupil outcomes. Each term there is a focused whole MAT staff meeting linked to MAT improvement priorities and every year we have a whole MAT INSET day when a range of CPD is offered to our staff.